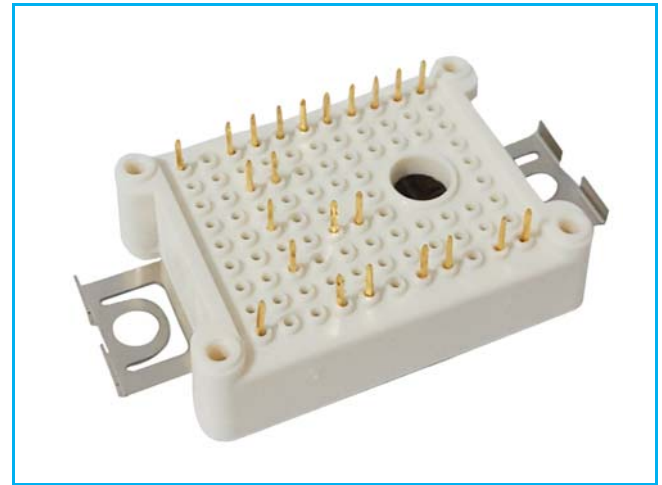


PRODUCT FEATURES

- IGBT CHIP(Trench+Field Stop technology)
- Substrate for Low Thermal Resistance
- Low saturation voltage and positive temperature coefficient
- Fast switching and short tail current
- Free wheeling diodes with fast and soft reverse recovery
- Solder Contact Technology, Rugged mounting due to integrated Mounting clamps
- Temperature sense included

APPLICATIONS

- AC motor control
- Motion/servo control
- Inverter and power supplies



IGBT-inverter

ABSOLUTE MAXIMUM RATINGS($T_C=25^{\circ}\text{C}$ unless otherwise specified)

Symbol	Parameter/Test Conditions		Values	Unit
V_{CES}	Collector Emitter Voltage	$T_J=25^{\circ}\text{C}$	1200	V
V_{GES}	Gate Emitter Voltage		± 20	
I_C	DC Collector Current	$T_C=25^{\circ}\text{C}, T_{Jmax}=175^{\circ}\text{C}$	27	A
		$T_C=105^{\circ}\text{C}, T_{Jmax}=175^{\circ}\text{C}$	15	
I_{CM}	Repetitive Peak Collector Current	$t_p=1\text{ms}$	30	
P_{tot}	Power Dissipation Per IGBT	$T_C=25^{\circ}\text{C}, T_{Jmax}=175^{\circ}\text{C}$	130	W

Diode-inverter

ABSOLUTE MAXIMUM RATINGS ($T_C=25^{\circ}\text{C}$ unless otherwise specified)

Symbol	Parameter/Test Conditions		Values	Unit
V_{RRM}	Repetitive Reverse Voltage	$T_J=25^{\circ}\text{C}$	1200	V
$I_{F(AV)}$	Average Forward Current		15	A
I_{FRM}	Repetitive Peak Forward Current	$t_p=1\text{ms}$	30	
I^2t		$T_J=125^{\circ}\text{C}, t=10\text{ms}, V_R=0\text{V}$	18	A^2S

MacMic Science & Technology Co., Ltd.

Add: #18, Hua Shan Zhong Lu, New District, Changzhou City, Jiangsu Province, P. R. of China

Tel.: +86-519-85163708 Fax: +86-519-85162291 Post Code: 213022 Website: www.macmicst.com

MMG15CB120X6TC

IGBT-inverter

ELECTRICAL CHARACTERISTICS ($T_C=25^{\circ}\text{C}$ unless otherwise specified)

Symbol	Parameter/Test Conditions		Min.	Typ.	Max.	Unit	
$V_{GE(th)}$	Gate Emitter Threshold Voltage	$V_{CE}=V_{GE}, I_C=0.38\text{mA}$	5.0	5.8	6.5	V	
$V_{CE(sat)}$	Collector Emitter Saturation Voltage	$I_C=15\text{A}, V_{GE}=15\text{V}, T_J=25^{\circ}\text{C}$		1.85	2.25		
		$I_C=15\text{A}, V_{GE}=15\text{V}, T_J=125^{\circ}\text{C}$		2.15			
		$I_C=15\text{A}, V_{GE}=15\text{V}, T_J=150^{\circ}\text{C}$		2.25			
I_{CES}	Collector Leakage Current	$V_{CE}=1200\text{V}, V_{GE}=0\text{V}, T_J=25^{\circ}\text{C}$			100	μA	
		$V_{CE}=1200\text{V}, V_{GE}=0\text{V}, T_J=150^{\circ}\text{C}$			10	mA	
I_{GES}	Gate Leakage Current	$V_{CE}=0\text{V}, V_{GE}=\pm 20\text{V}, T_J=25^{\circ}\text{C}$	-400		400	nA	
R_{gint}	Integrated Gate Resistor			0		Ω	
Q_g	Gate Charge	$V_{CE}=600\text{V}, I_C=15\text{A}, V_{GE}=15\text{V}$		0.105		μC	
C_{ies}	Input Capacitance	$V_{CE}=25\text{V}, V_{GE}=0\text{V}, f=1\text{MHz}$		1.1		nF	
C_{res}	Reverse Transfer Capacitance				50		pF
$t_{d(on)}$	Turn on Delay Time	$V_{CC}=600\text{V}, I_C=15\text{A}$ $R_G=30\Omega,$ $V_{GE}=\pm 15\text{V},$ Inductive Load	$T_J=25^{\circ}\text{C}$		20	ns	
			$T_J=125^{\circ}\text{C}$		25	ns	
			$T_J=150^{\circ}\text{C}$		25	ns	
t_r	Rise Time		$T_J=25^{\circ}\text{C}$		22	ns	
			$T_J=125^{\circ}\text{C}$		24	ns	
			$T_J=150^{\circ}\text{C}$		24	ns	
$t_{d(off)}$	Turn off Delay Time	$T_J=25^{\circ}\text{C}$		180	ns		
		$T_J=125^{\circ}\text{C}$		210	ns		
		$T_J=150^{\circ}\text{C}$		240	ns		
t_f	Fall Time	$T_J=25^{\circ}\text{C}$		160	ns		
		$T_J=125^{\circ}\text{C}$		195	ns		
		$T_J=150^{\circ}\text{C}$		220	ns		
E_{on}	Turn on Energy	$V_{CC}=600\text{V}, I_C=15\text{A}$ $R_G=30\Omega,$ $V_{GE}=\pm 15\text{V},$ Inductive Load	$T_J=125^{\circ}\text{C}$		1.71	mJ	
			$T_J=150^{\circ}\text{C}$		1.92	mJ	
E_{off}	Turn off Energy		$T_J=125^{\circ}\text{C}$		1.12	mJ	
			$T_J=150^{\circ}\text{C}$		1.21	mJ	
I_{SC}	Short Circuit Current		$t_{psc}\leq 10\mu\text{s}, V_{GE}=15\text{V}$ $T_J=150^{\circ}\text{C}, V_{CC}=800\text{V}$		60		A
R_{thJC}	Junction to Case Thermal Resistance (Per IGBT)			1.05	1.15	K/W	

Diode-inverter

ELECTRICAL CHARACTERISTICS ($T_C=25^{\circ}\text{C}$ unless otherwise specified)

Symbol	Parameter/Test Conditions		Min.	Typ.	Max.	Unit
V_F	Forward Voltage	$I_F=15\text{A}, V_{GE}=0\text{V}, T_J=25^{\circ}\text{C}$		2.1	2.65	V
		$I_F=15\text{A}, V_{GE}=0\text{V}, T_J=125^{\circ}\text{C}$		1.75		
		$I_F=15\text{A}, V_{GE}=0\text{V}, T_J=150^{\circ}\text{C}$		1.7		
t_{rr}	Reverse Recovery Time	$I_F=15\text{A}, V_R=600\text{V}$ $di_F/dt=-800\text{A}/\mu\text{s}$ $T_J=150^{\circ}\text{C}$		220		ns
I_{RRM}	Max. Reverse Recovery Current			25		A
Q_{RR}	Reverse Recovery Charge			2.6		μC
E_{rec}	Reverse Recovery Energy			0.75		mJ
R_{thJCD}	Junction to Case Thermal Resistance (Per Diode)			1.75	1.9	K/W

MMG15CB120X6TC

NTC CHARACTERISTICS ($T_C=25^\circ\text{C}$ unless otherwise specified)

Symbol	Parameter/Test Conditions	Min.	Typ.	Max.	Unit
R_{25}	Resistance $T_C=25^\circ\text{C}$		5		$\text{K}\Omega$
$B_{25/50}$	$R_2 = R_{25} \exp [B_{25/50}(1/T_2 - 1/(298.15 \text{ K}))]$		3375		K

MODULE CHARACTERISTICS ($T_C=25^\circ\text{C}$ unless otherwise specified)

Symbol	Parameter/Test Conditions	Values	Unit
T_{Jmax}	Max. Junction Temperature	175	°C
T_{Jop}	Operating Temperature	-40~150	
T_{stg}	Storage Temperature	-40~125	
V_{isol}	Isolation Breakdown Voltage AC, 50Hz(R.M.S), t=1minute	3000	V
CTI	Comparative Tracking Index	>200	
F	Mounting Force Per Clamp	20~50	N
Weight		25	g

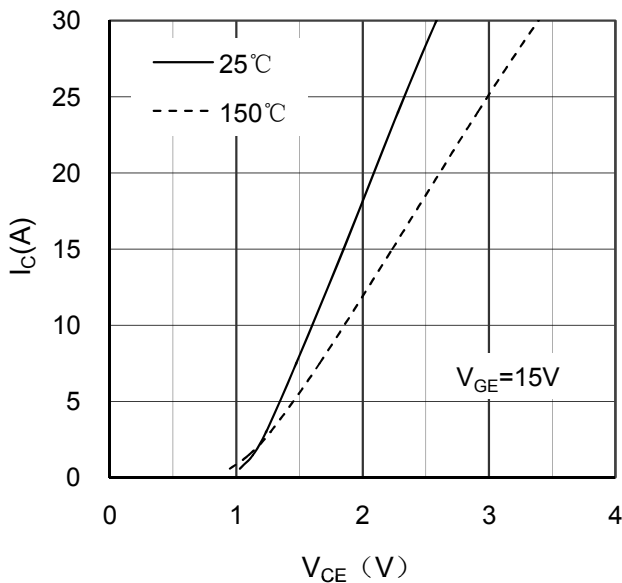


Figure 1. Typical Output Characteristics IGBT-inverter

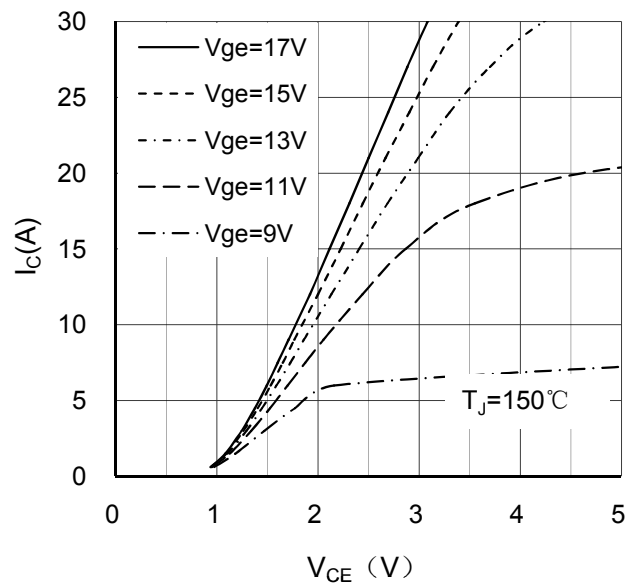


Figure 2. Typical Output Characteristics IGBT-inverter

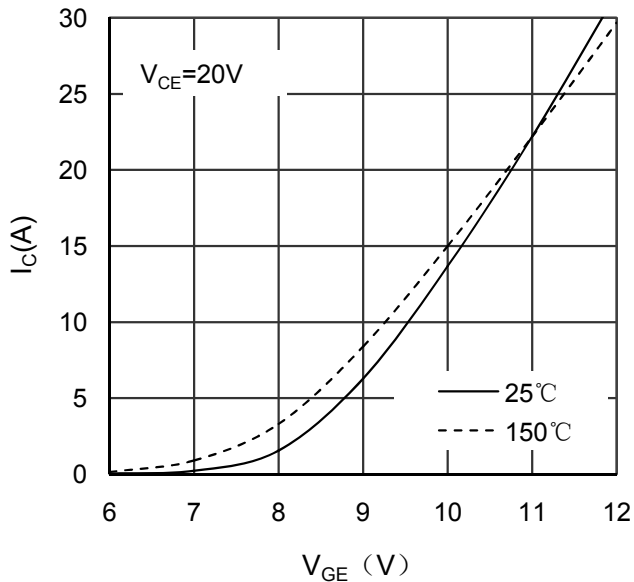


Figure 3. Typical Transfer characteristics IGBT-inverter

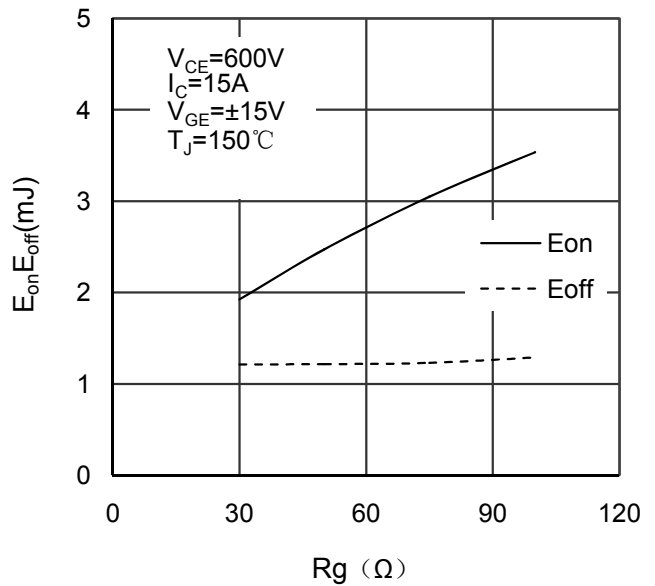


Figure 4. Switching Energy vs Gate Resistor IGBT-inverter

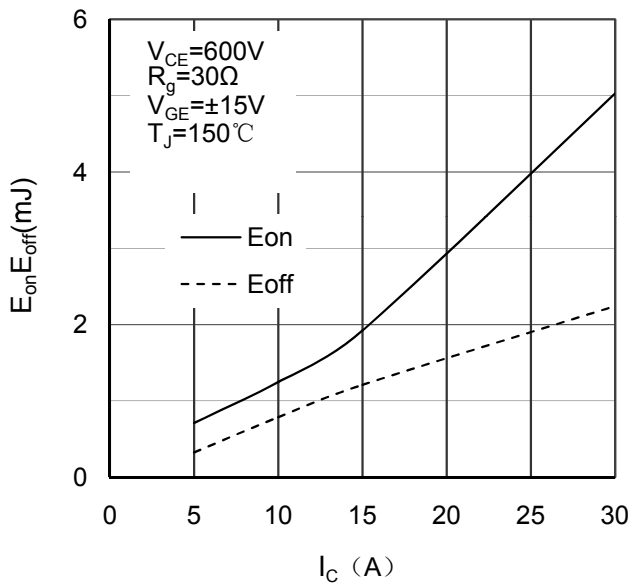


Figure 5. Switching Energy vs Collector Current IGBT-inverter

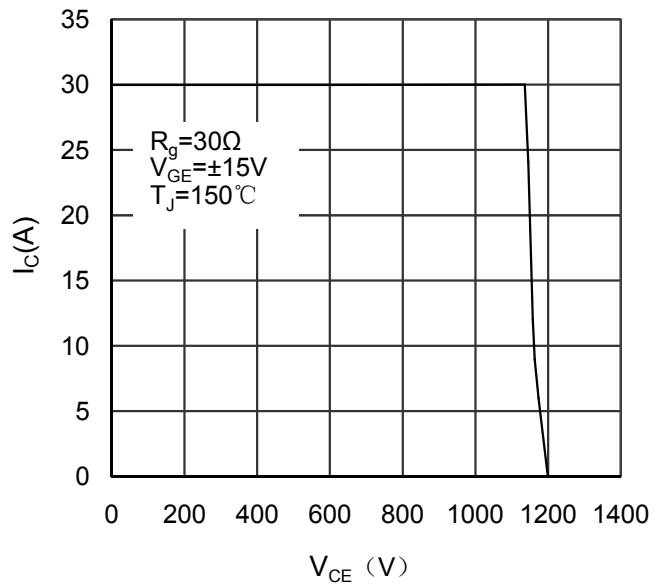


Figure 6. Reverse Biased Safe Operating Area IGBT-inverter

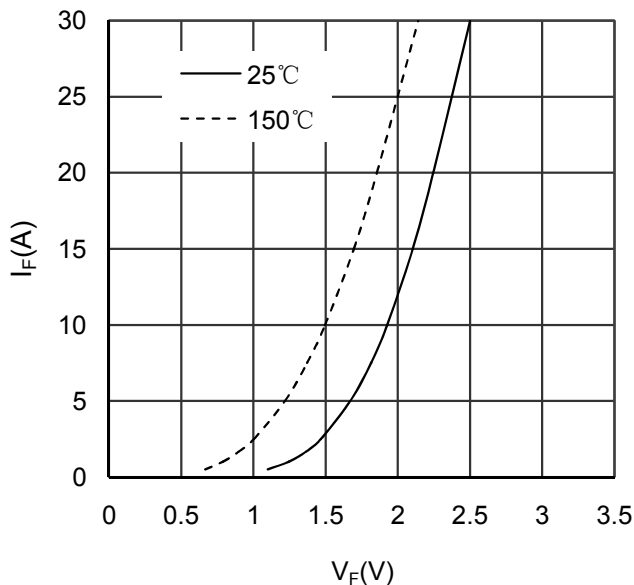


Figure 7. Diode Forward Characteristics Diode -inverter

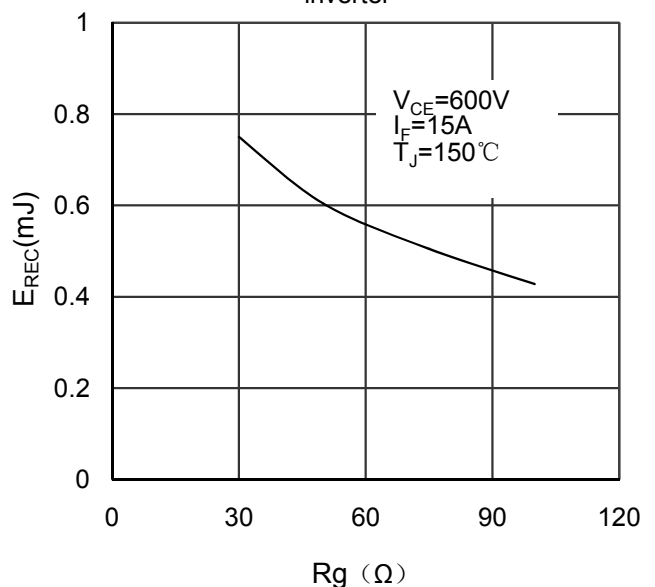


Figure 8. Switching Energy vs Gate Resistor Diode -inverter

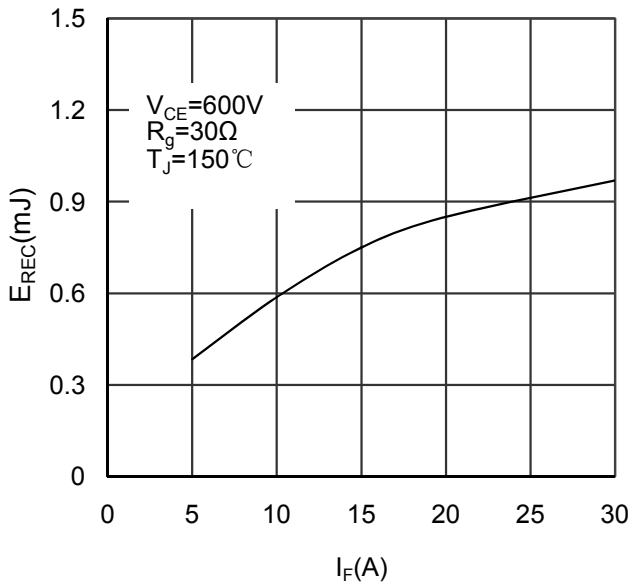


Figure 9. Switching Energy vs Forward Current Diode-inverter

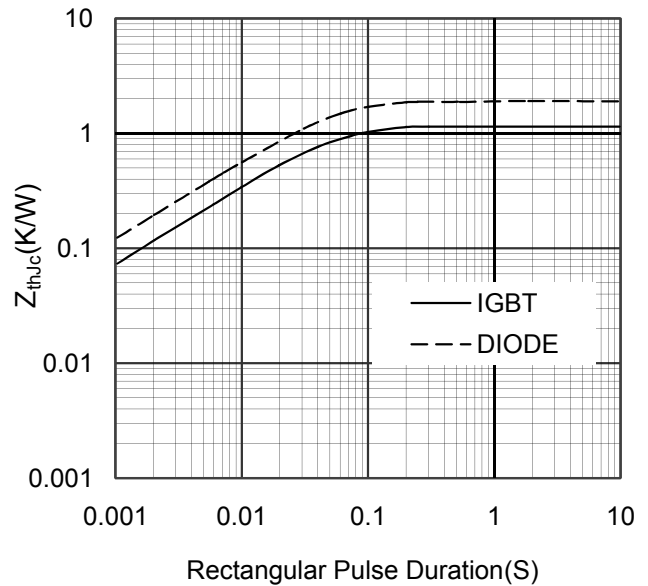


Figure 10. Transient Thermal Impedance of Diode and IGBT-inverter

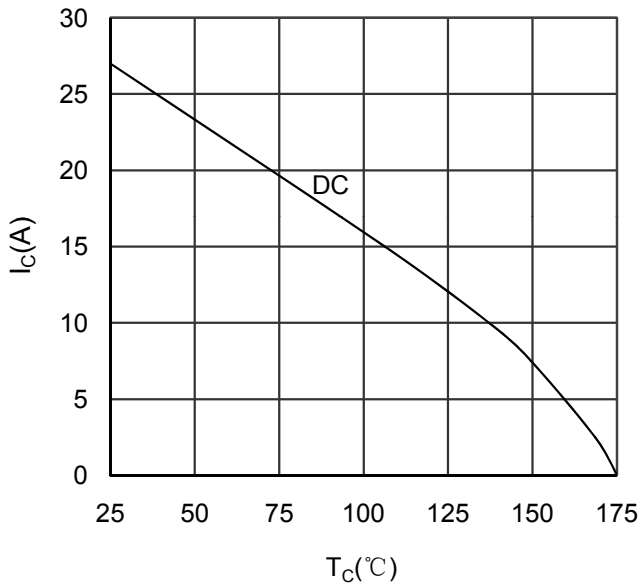


Figure 11. Collector Current vs Case temperature IGBT -inverter

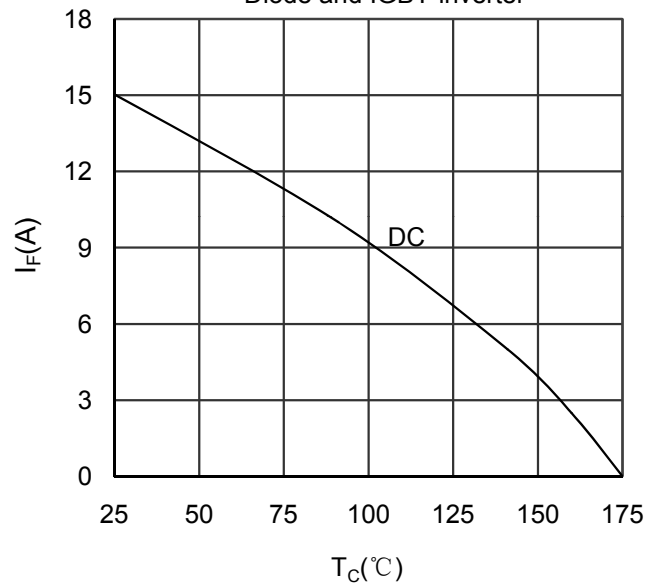


Figure 12. Forward current vs Case temperature Diode -inverter

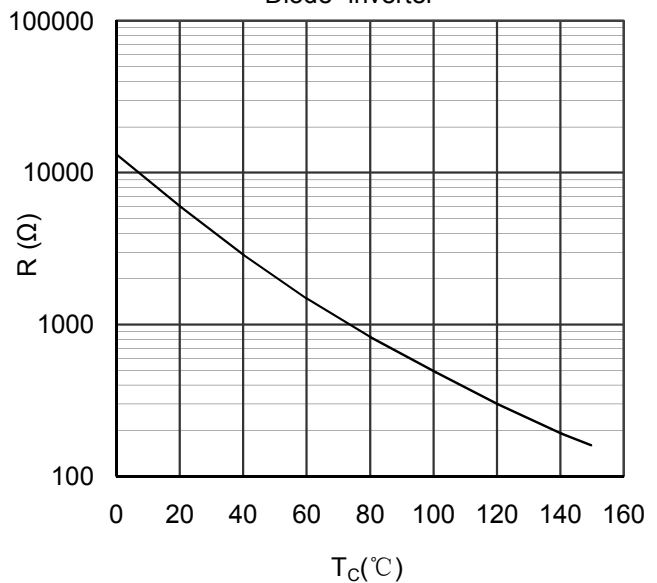


Figure 13. NTC Characteristics

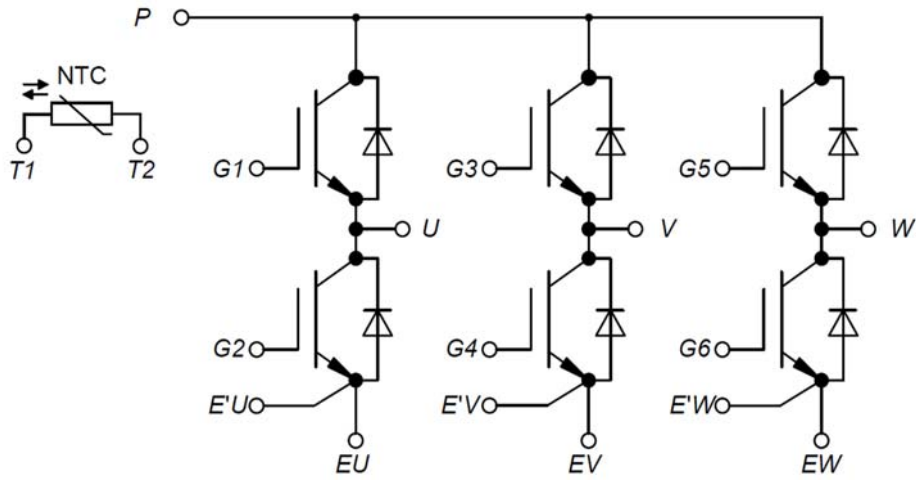
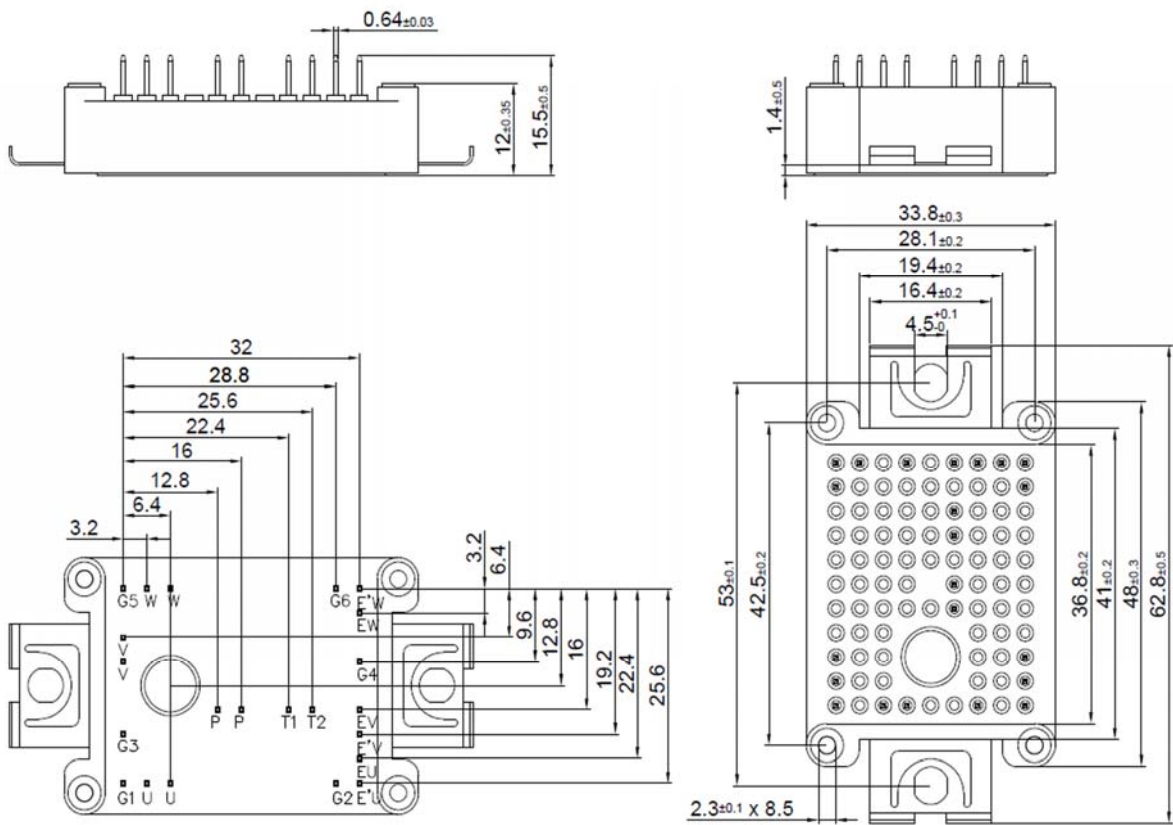


Figure 14. Circuit Diagram



Dimensions in (mm)

Figure 15. Package Outline