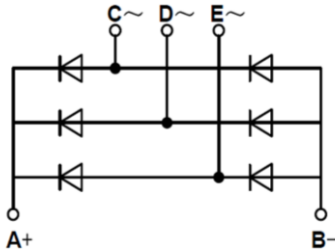


## PRODUCT FEATURES

- Low Forward Voltage
- High Surge Current Capability
- Low Leakage Current
- Low Inductance Package

## APPLICATIONS

- Field Supply For DC Motors
- Line Rectifiers For Transistorized AC Motor Controllers
- Non-controllable Rectifiers For AC/DC Converter
- UL:E332185



### Module Type

Module Type	$V_{RRM}$ Repetitive Peak Reverse Voltage	$V_{RSM}$ Non-Repetitive Peak Reverse Voltage	Unit
MMD250F160X	1600	1700	V

### ABSOLUTE MAXIMUM RATINGS ( $T_C = 25^\circ\text{C}$ unless otherwise specified)

Symbol	Parameter/Test Conditions		Values	Unit
$I_D$	Output Current(D.C.)	Three phase, full wave, $T_C = 90^\circ\text{C}$	250	A
$I_{FSM}$	Non-Repetitive Surge Forward Current	1/2 cycle, 50HZ, peak value, $T_J = 45^\circ\text{C}$	2500	
		1/2 cycle, 60HZ, peak value, $T_J = 45^\circ\text{C}$	2700	
$I^2t$	For Fusing	1/2 cycle, 50HZ, peak value, $T_J = 45^\circ\text{C}$	31.2	KA <sup>2</sup> S
		1/2 cycle, 60HZ, peak value, $T_J = 45^\circ\text{C}$	30.2	
$P_D$	Power Dissipation		1560	W
$T_J$	Junction Temperature		-40 to +150	$^\circ\text{C}$
$T_{STG}$	Storage Temperature Range		-40 to +125	$^\circ\text{C}$
$V_{ISO}$	Isolation Breakdown Voltage	AC, 50Hz(R.M.S), $t=1$ minute	3000	V
Torque	Module to Sink	Recommended (M6)	3~5	Nm
Torque	Module Electrodes	Recommended (M6)	3~5	Nm
$R_{thJC}$	Junction to Case Thermal Resistance		per diode	K/W
			per module	
Weight			250	g

MacMic Science & Technology Co., Ltd.

# MMD250F160X

## ELECTRICAL CHARACTERISTICS ( $T_C=25^\circ\text{C}$ unless otherwise specified)

Symbol	Parameter/Test Conditions	Min.	Typ.	Max.	Unit
$I_{RM}$	Maximum Reverse Leakage Current			0.5	mA
				$V_R = V_{RRM}, T_J = 125^\circ\text{C}$	
$V_F$	Forward Voltage Drop			1.55	V
$V_{TO}$	For power loss calculations only, $T_J = 125^\circ\text{C}$			0.85	V
$r_T$				2.7	m $\Omega$

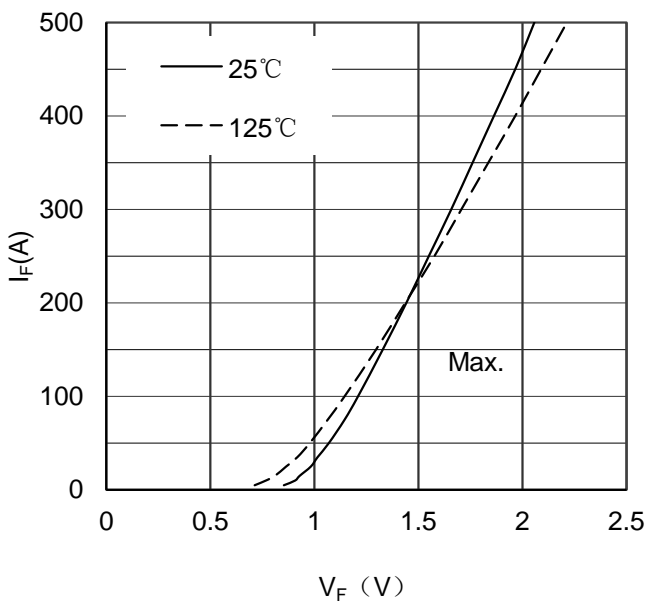


Figure 1. Forward Voltage Drop vs Forward Current

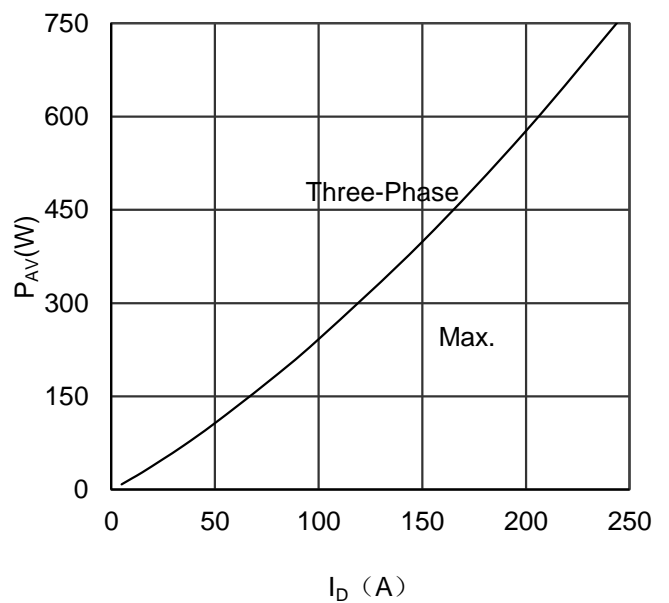


Figure 2. Power dissipation vs Output Current

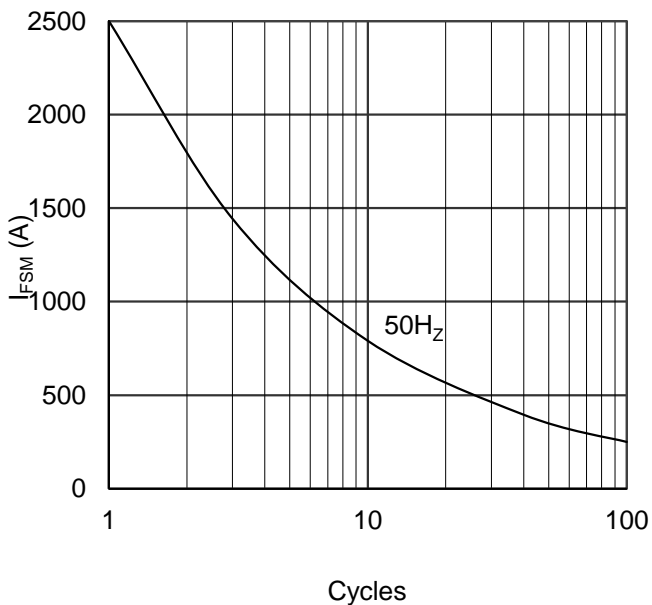


Figure 3. Max Non-Repetitive Forward Surge Current

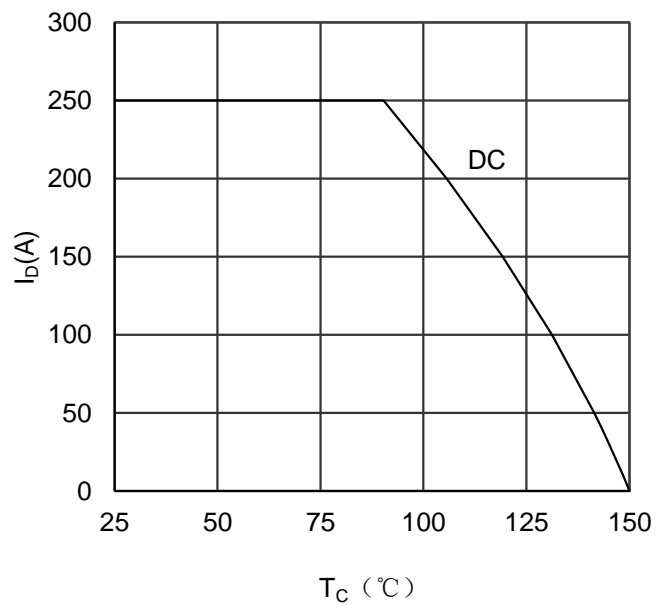
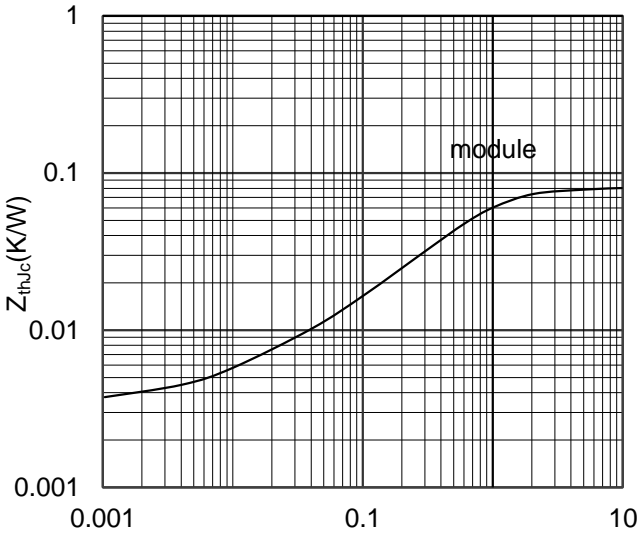
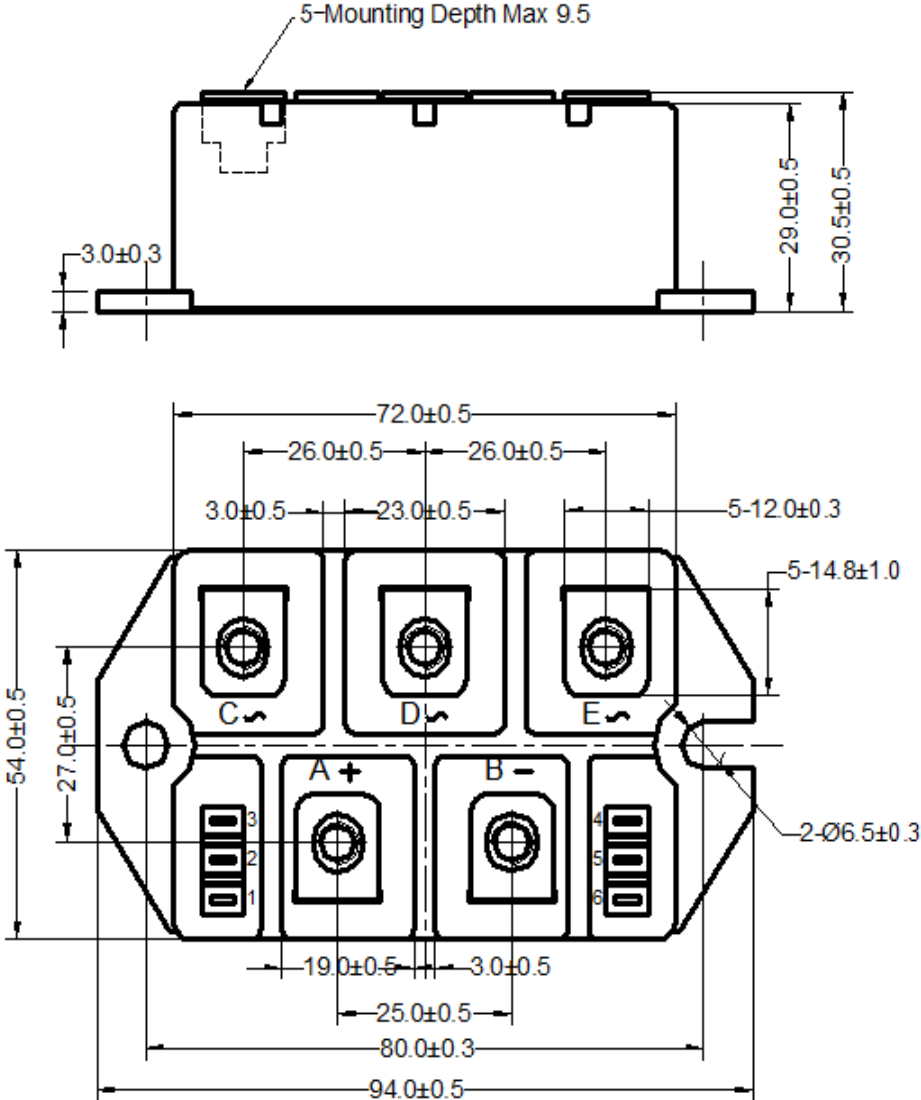


Figure 4. Output current vs Case temperature

MMD250F160X



Rectangular Pulse Duration(S)  
Figure 5. Transient Thermal Impedance



Dimensions in (mm)  
Figure 6. Package Outline